



2024-25 Scholarship Ambassador TESS



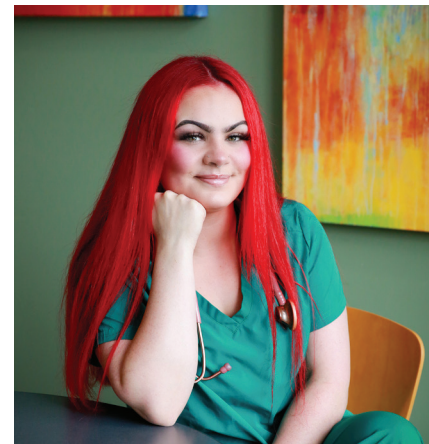
Tess | Nursing Student

A health professional who put her career aspirations on hold when personal tragedy intervened, Tess credits her passion for healthcare and the affordable, close-knit environment of LCC with inspiring her to return to complete a degree in nursing.

Tess holds her bachelor's degree in public health from Western Oregon University. She delayed her pursuit of a nursing degree when her brother passed away, but now she strives to reach this goal with renewed determination.

WHAT DRIVES TESS

- A passion for healthcare spurred by the pandemic
- Family influences, including her nurse practitioner aunt
- The many different specializations and career options for nurses



I chose Lane, because it's smaller, more affordable — and it's actually one of the schools my younger brother wanted to go to. It kind of pushed me more to Lane because of that connection — almost like I'm doing it for him.”

– Tess

Why LCC?

Affordability

Proximity to family

Tight-knit community

A resident of Eugene, Tess felt like LCC was a natural fit for many reasons, including the reasonable costs, financial support, and proximity to her family.

“Being able to get scholarships through LCC Foundation has let me take classes without having to work as much — last year, I was working full-time, to the point of having to miss class to pay my bills. Now I can stay focused more on studying and learning as much as possible.”

Tess's resilience, dedication, and focus on healthcare equity as reasons drives her pursuit of a nursing degree. She hopes to be a role model for others to attend LCC, grow, and discover what drives them.



Why Tess Pursued Healthcare

- Supporting communities with needed services
- Providing resources to fight persistent disease
- Identifying healthcare inequities



College gives you opportunities to grow as a person and make connections. Figure out what you like, make friends — give it a chance if you have the opportunity.”

– Tess

A LASTING, LOCAL LANE

LEARN LOCAL, WORK LOCAL.



541-463-5538
 foundation@laneccfoundation.org
 lanecce.edu/Foundation