

Hours of Operation

The Public Safety Office, located in Building 12 on the second floor, is open Monday through Friday from 8AM to 5PM.

Public Safety Officers are on-duty 24/7, including holidays.

For more information regarding campus public safety please visit our website, or stop in for a visit.

If you need assistance any time at any campus location, please call our non-emergency phone line at 541-463-5558.

www.lanecc.edu/psd



To request this information in an alternate format, contact the Center for Accessible Resources in Building 19 room 263A 541-463-5150 accessibleresources@lanecc.edu

Lane Community College

Parking and Citation Information



Emergency Line:
(541) 463-5555

Non-emergency line:
(541) 463-5558

www.lanecc.edu/psd



Parking on Campus

Parking is permitted in designated parking spaces only. All legal parking spaces are defined by white or yellow space markings. Responsibility for locating a legal parking space rests with the vehicle operator.

- **General Parking** is available in all lots and is on a first-come, first-serve basis.
- **Disabled Parking** spaces are available in lots A, B, C, D, E, L, N and in the covered area between Building 15 and the Center Building. All persons with a disabled parking permit may use these spaces. (Valid permits **must** be displayed.)
- **Special Permit Parking** has been designated in many of the parking lots on campus. To apply for a special permit for a specific area, contact the Public Safety office.
- **Loading and Unloading:** The Public Safety Office issues permits to persons for loading/unloading required college-related materials.
- **Vendor/Trades Parking:** The Public Safety Office issues permits to vendors and trades persons on the 30th Ave. campus.
- **Overnight Parking** is allowed only by special arrangement with Public Safety.
- **Fire Lane/Hydrant:** Parking on a yellow or red fire line curb is forbidden on campus, and it is illegal to park within 10 feet of any fire hydrant in the State of Oregon. If you park near a yellow or red curb be sure to look around and move your vehicle away from the painted area, especially if there's a fire hydrant close by.

Bail Schedule

{Subject to change}

Parking Violations	1st	2nd	3rd	3rd + R
Parking in any posted handicap space without a valid permit, or failure to display valid permit.	\$120	\$240	\$360	\$360 + Referral
Parked in covered area near the Center Building.	\$20	\$50	\$100	\$100 + Referral
Parked in a fire lane.	\$40	\$80	\$160	\$160 + Referral
Parked overtime in any time-limited space, or parked next to a yellow line, on a sidewalk, or in a pedestrian area.	\$20	\$50	\$100	\$100 + Referral
Partially, or completely blocking another vehicle, street, or driveway. Parked blocking the Motorcycle Course in Lot N when scheduled for use.	\$20	\$50	\$100	\$100 + Referral
Parked in a manner that takes up 2 spaces, blocks or restricts a building entrance, is posted special permit, or restricted parking are. Parked over 72 hours on campus.	\$20	\$50	\$100	\$100 + Referral

Parking Appeals

Citation/s may be appealed to the Citation Hearings Committee. This process is printed on the **back** of the citation. Please read the options on the back of your citation carefully. If you have any questions after reading your options, please call Public Safety non-emergency line at 541-463-5558.

Tips for Avoiding Fines

While on campus, improve both your experience and the safety of the campus community by driving safely and with courtesy.

Travel at a safe speed for the present weather, traffic, and pedestrian conditions. Observe signs posted on campus to assist you in being safe while at Lane Community College. Failure to obey traffic laws puts you, your vehicle, and other people at risk.

Park in a legal space between the standard lines, or centered with a concrete parking bumper. If the space has a sign, do you have the required permit for that space? If there is a time limit, note the time, and be sure to move your vehicle accordingly.

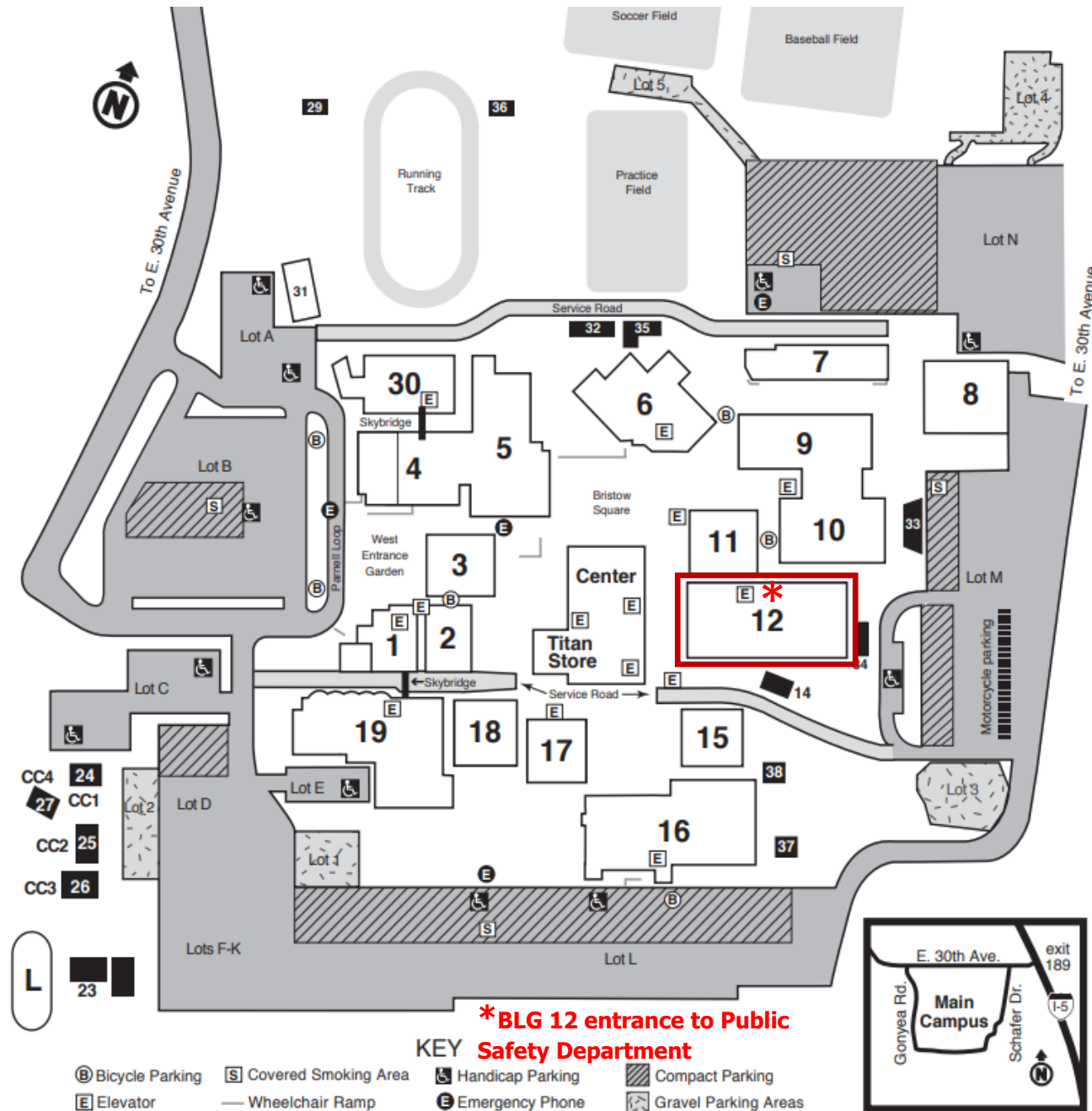
Drivers are responsible for following parking regulations at all times on any LCC campus.

Typically, competition for parking spaces during the first two weeks of fall, winter, and spring terms is at its highest. To avoid the stress of trying to locate a spot:

- **Ride the bus.**
- **Carpool.**
- **Arrive early for classes or events, if you must drive.**

Lane Community College Main Campus

4000 East 30th Avenue • Eugene, Oregon 97405 • (541) 463-3000

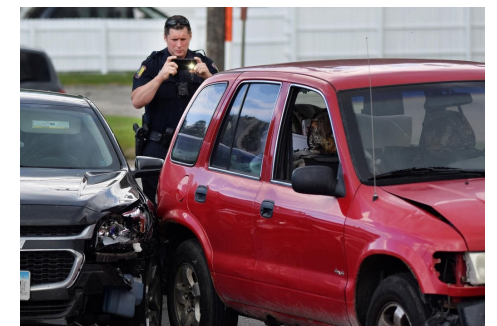


Common Driver Errors

Common driver errors are generally the result of impatience. When coming to campus, allow enough time to navigate the traffic both in route to, and while on campus. When drivers are rushed, they can drive more aggressively, failing to allow stopping distance for the local conditions. They tend to be distracted looking for the perfect parking space and may miss brake lights, stop signs, and directional markers.

If one cannot find the perfect parking space, some may gamble by parking in spaces or areas that are not legal parking spaces, such as pedestrian crosswalks or walkways, Fire Zones, landscapes (off the pavement), or even on the roadway, or in front of speedbumps. Doing so may result in a parking citation (see reverse side for violations)

When running late, ample parking is usually available in Lot N (by the baseball field, across from Buildings 6, 7, and 8). Lot N is within a five-minute walk to the inner campus.



Please Note the LCC Department of Public Safety is a governed agency, which has access to DMV driver and vehicle information.