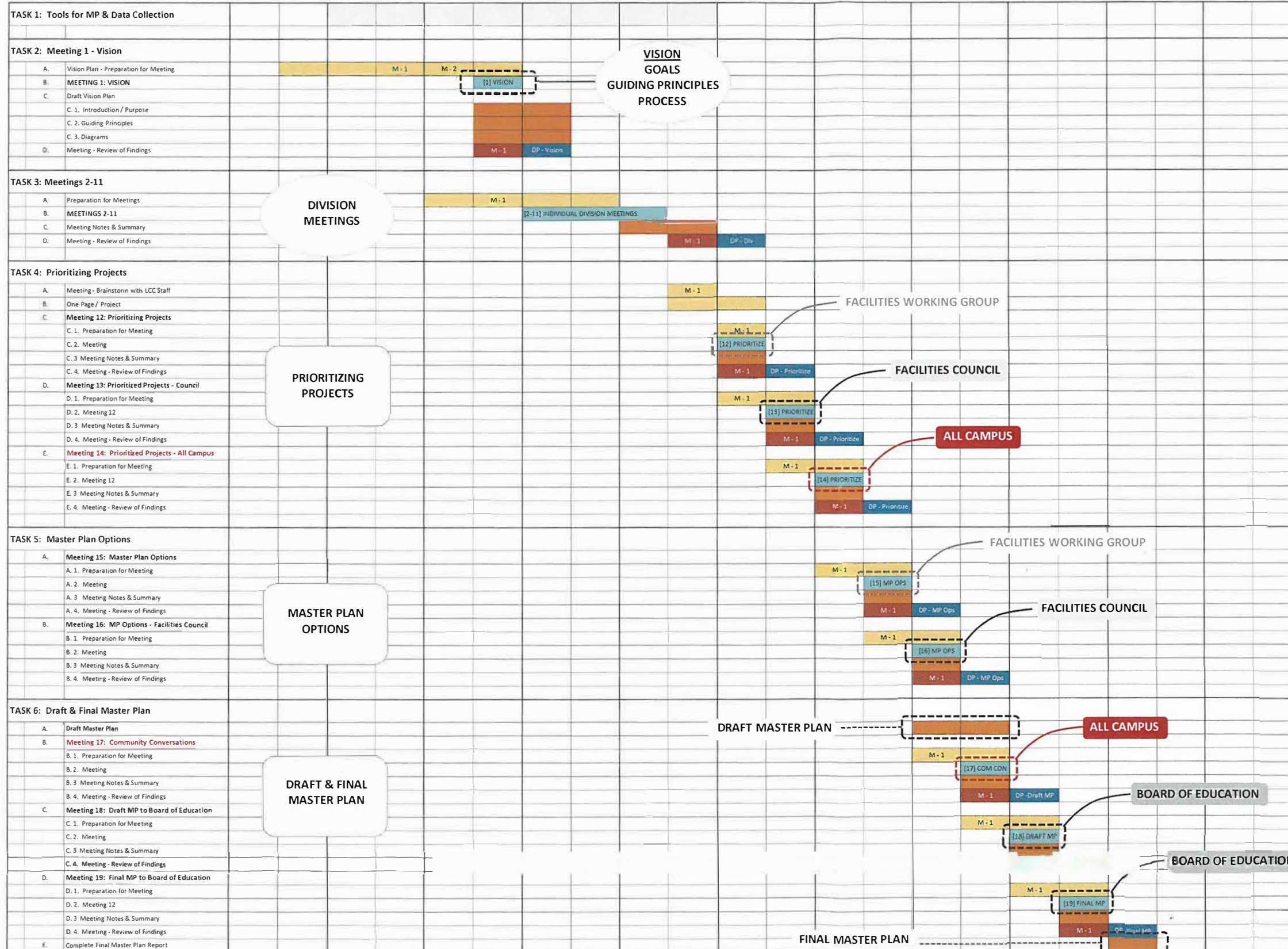


# LCC Master Plan

## Phase II Schedule

Attachment 2

	October	November	December	January	February	March	April	May	June	July	August
--	---------	----------	----------	---------	----------	-------	-------	-----	------	------	--------



## ROWELL BROKAW

1203 Wilamette Street  
Suite 210  
Eugene, Oregon 97401  
541-485-1003  
rowellbrokaw.com

Architecture. Design. Strategy.



- M - 1 One meeting with RB, CR & LCC Facilities Staff
- Meeting Preparation
- Meeting - See Master Plan Schedule of Meetings and Timeline for 2018-2019
- Meeting Notes / Summary / Report
- Meeting - Review of Findings - Follow-up Meeting with LCC Staff
- Decision Point for LCC to convey direction to team