

---

# TITLE IX, HAZING, ACADEMICS

---

For LCC Athletic Teams

Presented by Carl Yeh, Deputy Title IX Coordinator, on September 21, 2020

[yehc@lanecc.edu](mailto:yehc@lanecc.edu), 541-463-5787

---

---

# GOALS

- What is **Title IX** and how can you support it?
- What is **hazing** and how can you recognize and stop it?
- What is **academic integrity** and why should you practice it?



---

# WHAT IS TITLE IX?

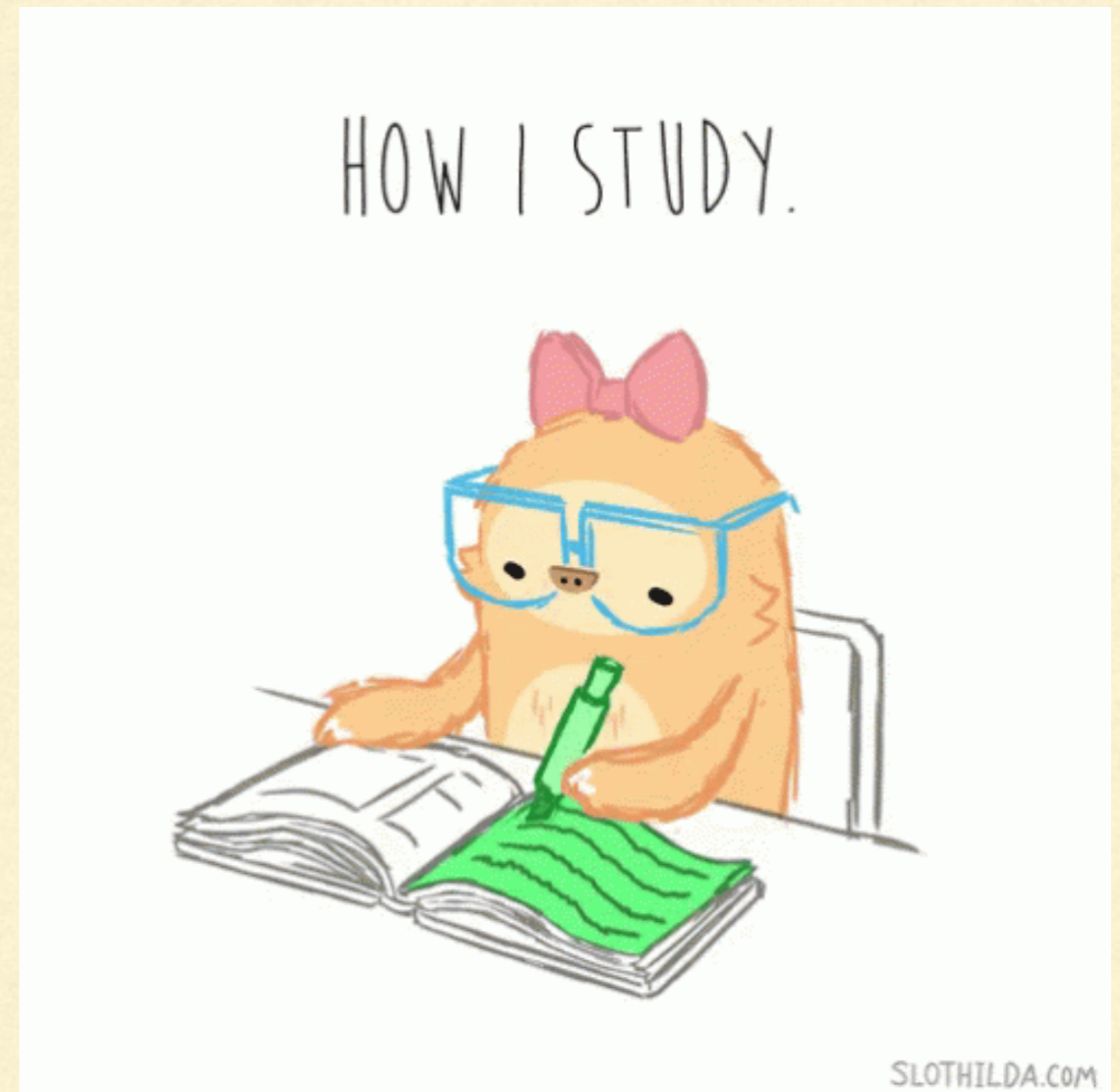
- Title IX of the Education Amendments of 1972 (also 20 U.S.C. §§ 1681–1688). In other words, it's **FEDERAL LAW**
- The Law: “No person in the United States shall, on the basis of sex, be excluded from participation in, be denied the benefits of, or be subjected to discrimination under any education program or activity receiving Federal financial assistance.”



---

# MAIN POINTS

- Not just about athletics or females
- College has to be proactive and have a procedure for reports/complaints
- College has to take immediate action to stop the behavior, no retaliation
- No-contact directives
- All parties will get due process



## WHAT DOES IT LOOK LIKE?

- “Hostile environments”, including harassment, sexually based talk, images, etc.
- Unwanted touching—does not have to be sexual parts
- ANY Non-consensual sexual activity, including incapacitation
- Physical and violent assaults
- “Domestic”/Interpersonal violence, roommates, etc.



---

# ATHLETES' RESPONSIBILITY

- Pay attention to how you interact with others, especially in sexual situations and situations with alcohol and other drugs
- Err on the “side of caution”
- If you see inappropriate behavior, say something. Try to stop it.
- Report it to Title IX and/or coaching staff.
- Don't participate in inappropriate behavior



---

# WHAT IS CONSENT?

---

- Consent to one act does not constitute consent to another act.
- Consent on a prior occasion does not constitute consent on a subsequent occasion.
- The existence of a prior or current relationship does not, in itself, constitute consent.
- Consent can be withdrawn or modified at any time.
- Consent is not implicit in a person's manner of dress.  
Accepting a meal, a gift, or an invitation for a date does not imply or constitute consent.
- Silence, passivity, or lack of resistance does not necessarily constitute consent.
- Initiation by someone who a reasonable person knows or should have known to be deemed incapacitated is not consent.

---

# RESOURCES FOR SURVIVORS

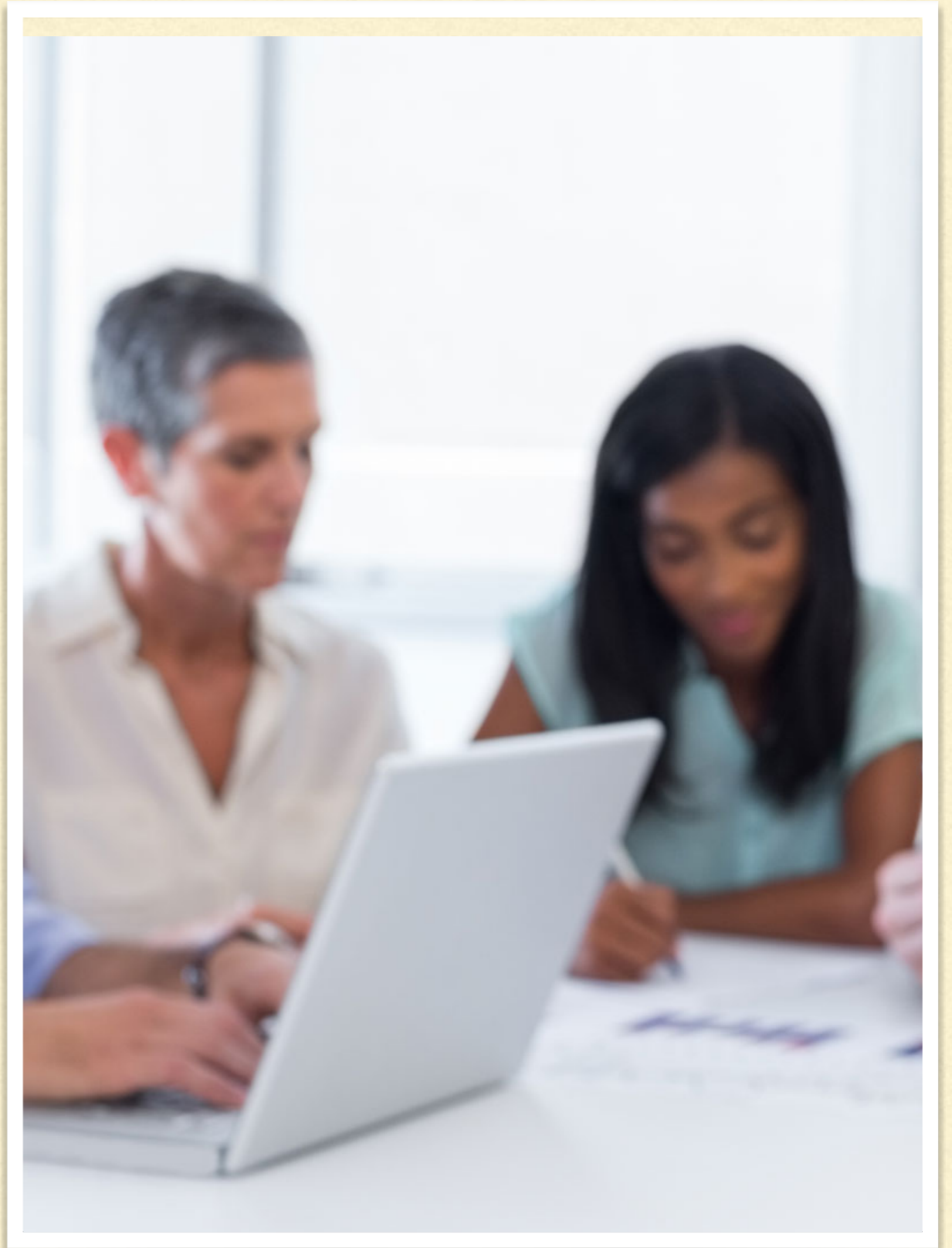
---

- LCC Gender Equity Center (<https://www.lanecc.edu/gec/womens-center>)
  - LCC Counseling Center (<https://www.lanecc.edu/cc>)
  - Student Survivor Legal Services (<https://ssls.uoregon.edu/>)
  - Sexual Assault Support Services (SASS) (<http://sass-lane.org/>)
  - Women's Space (<http://womenspaceinc.org/>)
  - LCC Public Safety (<https://www.lanecc.edu/psd>)
  - Lane County Sheriff's Office ([http://www.lanecounty.org/government/county\\_departments/sheriff\\_s\\_office](http://www.lanecounty.org/government/county_departments/sheriff_s_office))
  - Eugene Police Department (<https://www.eugene-or.gov/1358/Eugene-Police-Department>)
  - Springfield Police Department ([http://www.ci.springfield.or.us/dept\\_pol.htm](http://www.ci.springfield.or.us/dept_pol.htm))
-



# WHO IS CONFIDENTIAL?

- What does “confidentiality” mean (versus “privileged information”)?
- LCC Counselors
- LCC Health Clinic
- Off-campus support services may vary depending on the organization/position.
- Privileged (generally): medical professionals, lawyers, and clergy
- Lane staff who have a need-to-know will limit it to only others who have a need-to-know



---

# PROCESS

- Report
- Remediation
- Investigation
- Findings
- Appeal
- Outcome



---

# POLL

---

You meet a person at a party and feel like you've "hit it off" right away. The person has had at least four alcoholic beverages that evening and needs a ride home. After rejecting several offers from you, the person finally accepts. When you get to the person's apartment, you ask if you can get a tour of the home, which the person gives. When inside, both of you are hugging and kissing each other and eventually end up in bed without clothes, but she falls asleep. What should happen next?

- A. Wake her up!
  - B. Continued hugging and kissing is okay.
  - C. Sexual intercourse is okay.
  - D. Self-pleasure next to her is okay.
  - E. Something else?
-

---

# POLL

---

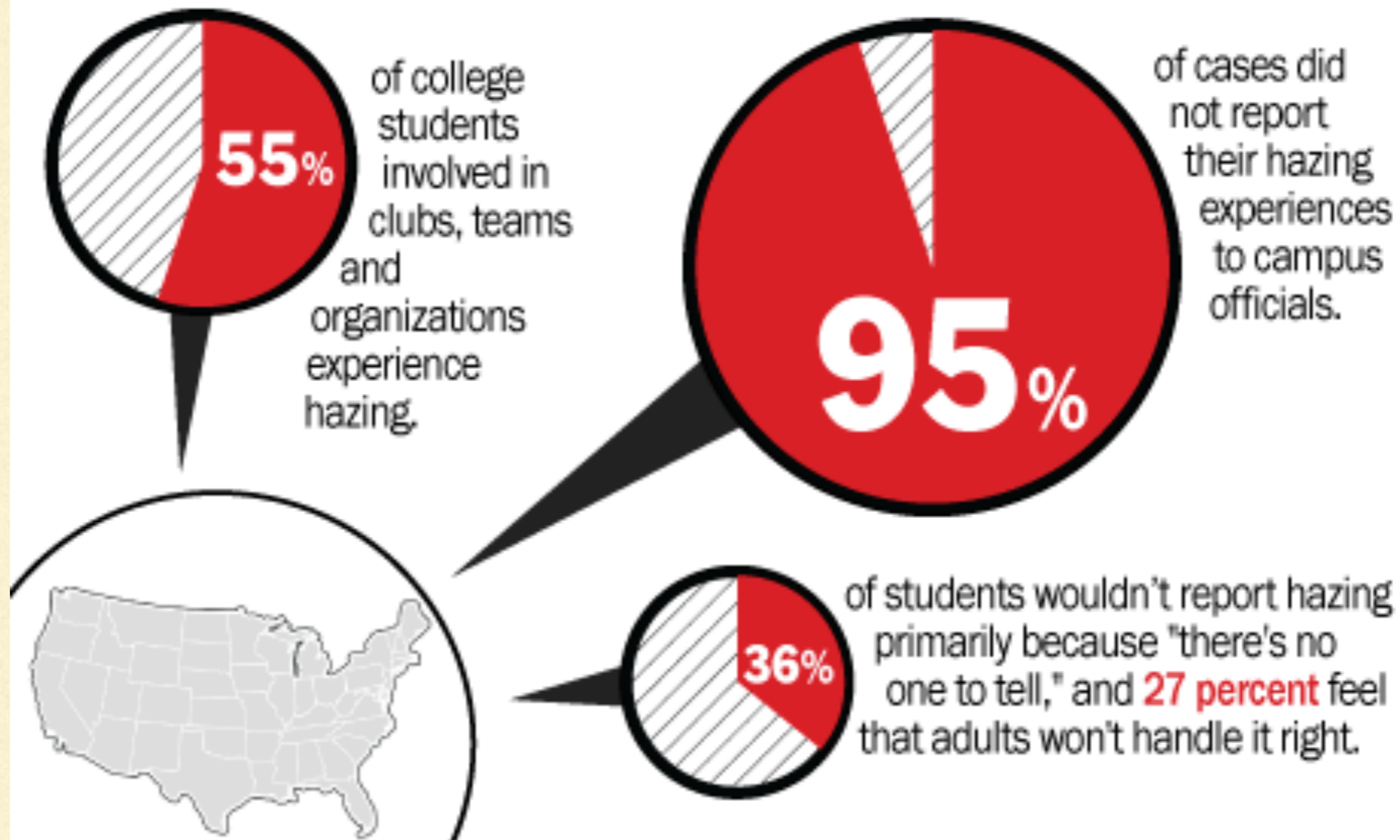
At the first time, your partner has made it clear that condoms are a **MUST** during sexual intercourse. Several days and times later you “forgot” to use one and during the intercourse your partner realizes it, and is angry with you. As a college student, have you committed a violation?

- A. Maybe.
  - B. Definitely.
  - C. Pressure your partner not to file a complaint.
  - D. Something else?
-

# WHAT IS HAZING?

## National hazing statistics

SOURCE: HazingPrevention.org



---

# UNIVERSITY OF NEW MEXICO WOMEN'S SOCCER

---

<https://www.youtube.com/watch?v=DAXh6UYMdqk>



---

# HAZING DEFINED (CODE OF STUDENT CONDUCT)

---

Defined as an act that endangers the mental or physical health or safety of a student, or that destroys or removes public or private property, for the purpose of initiation, admission into, affiliation with, or as a condition for continued membership in a group or organization. Participation or cooperation by the person(s) being hazed does not excuse the violation. Failing to intervene to prevent (and/or) failing to discourage (and/or) failing to report those acts may also violate this policy.

---

---

# SOME EXAMPLES OF HAZING

---

- Silence periods with implied (or direct) threats for violating the silence
  - Expecting certain items to always be in possession
  - Skits with degrading, crude, or humiliating acts
  - Forced ingestion of alcohol, drugs, vile substances, etc.
  - Implied threat or possibility of bodily harm
  - Forced to stay in a room
  - Exposure to extreme cold or heat without appropriate protection
-



---

# HOW TO INTERVENE?


---

1. Must be able to notice
  2. Must be able to recognize it as a problem
  3. Must be able to determine you are responsible for the problem
  4. Must be able to use your skills and resources to act
  5. Report to athletic staff and/or Student Standards
-

# STUDENT CONDUCT

Secure | <https://www.lanecc.edu/studentconduct>

APPLY & ENROLL PROGRAMS STUDENT LIFE CONNECTIONS ABOUT

 **STUDENT CONDUCT**

**Student Conduct**

- » [FAQ for Faculty and Staff](#)
- » [Problem Solving Student Issues](#)
- » [Contacts](#)

**Students of Concern**

- [Report a student incident](#) - Incident Report Form
- [Student Code of Conduct](#)
- [Student Issues: Problem Solving Tips and Resources for Faculty](#)
- [Student Issues: Frequently asked questions](#)
- [Referrals when working with students](#) - Referral Matrix for students of concern

- Code of Student Conduct (rules and procedures for students)
- Online report form: Click on “Report a student incident” at <https://www.lanecc.edu/studentconduct>

---

# ACADEMIC INTEGRITY

---

- Follow your instructor's instructions—if you don't know, ASK.
  - Do not copy without citation
  - Do not “compare notes” or get information from others (unless explicitly told to do so); do not GIVE the information either
  - Do not use information you suspect you shouldn't be using—this includes buying (or uploading) papers and tests
  - How does any of this help your future? (Why is this important?)
-

---

# POLL

---

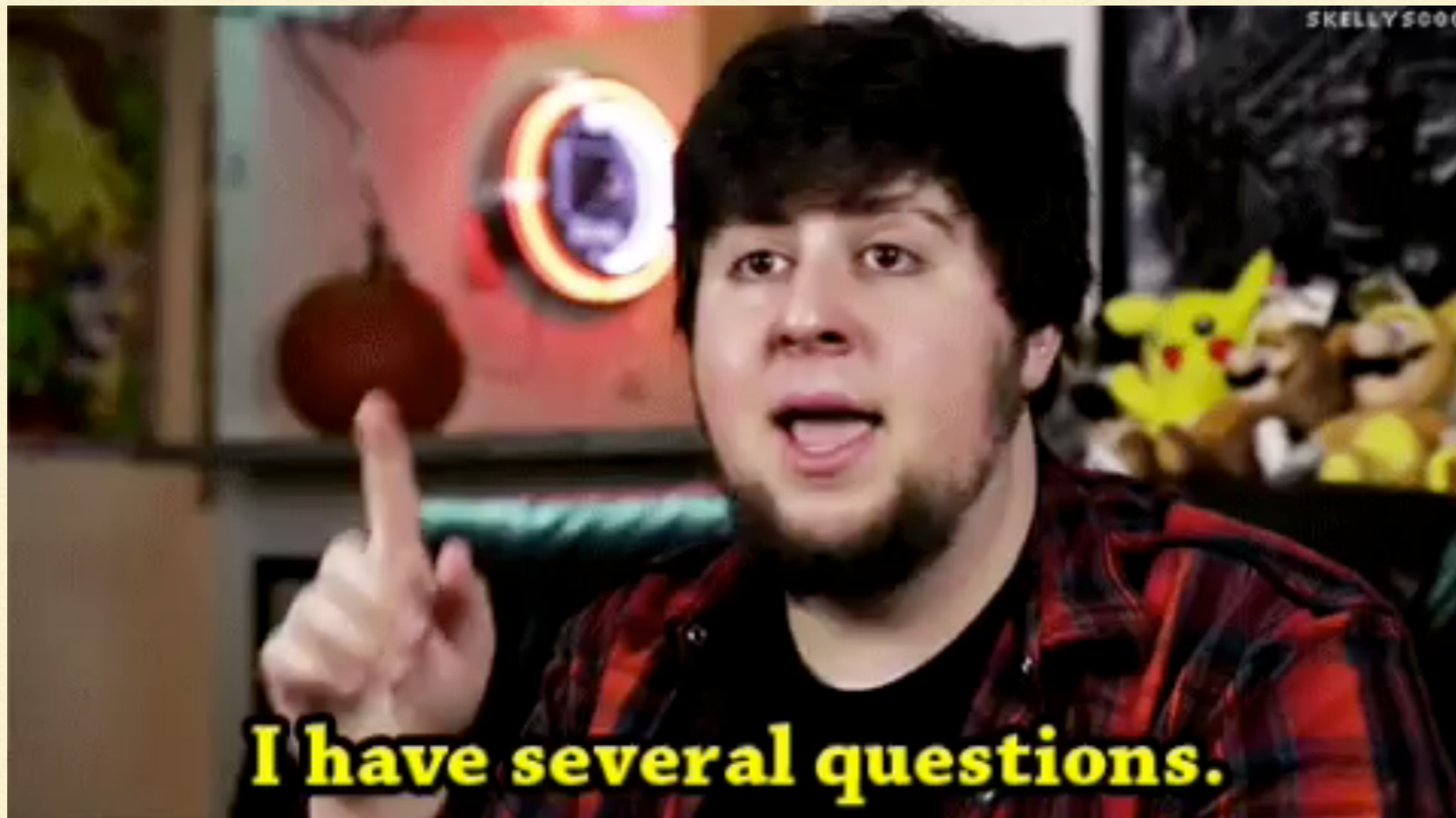
Your best friend is taking History 202, which you took last year. Your friend is having trouble writing the final essay and asks if you could text a copy of what you turned in last year. Your friend just wants to “look at it”.

- A. Say “No”
  - B. Text it right away
  - C. Delete identifying information on the essay and the metadata and THEN text it to the friend
  - D. Offer to read what he has so far and give suggestions
  - E. Suggest using LCC’s student resource/tutoring centers
-

---

# QUESTIONS?

---



Carl Yeh: 541-463-5787, [yehc@lanecc.edu](mailto:yehc@lanecc.edu)

---